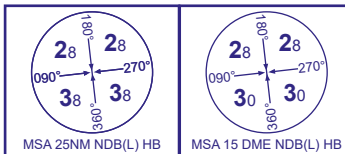
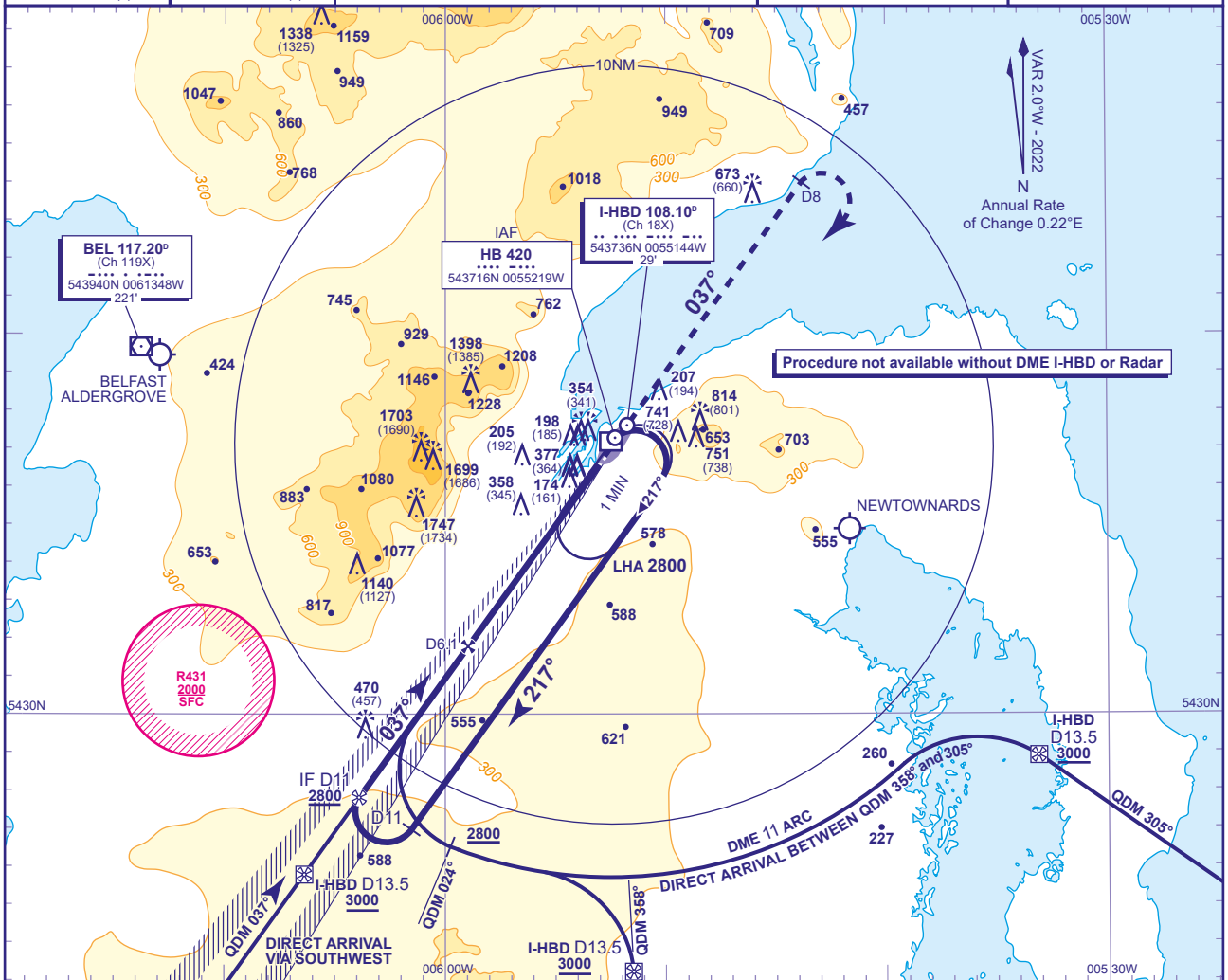


INSTRUMENT APPROACH - ICAO

BELFAST CITY
ILS/DME/NDB(L)
RWY 04
(ACFT CAT A,B,C)

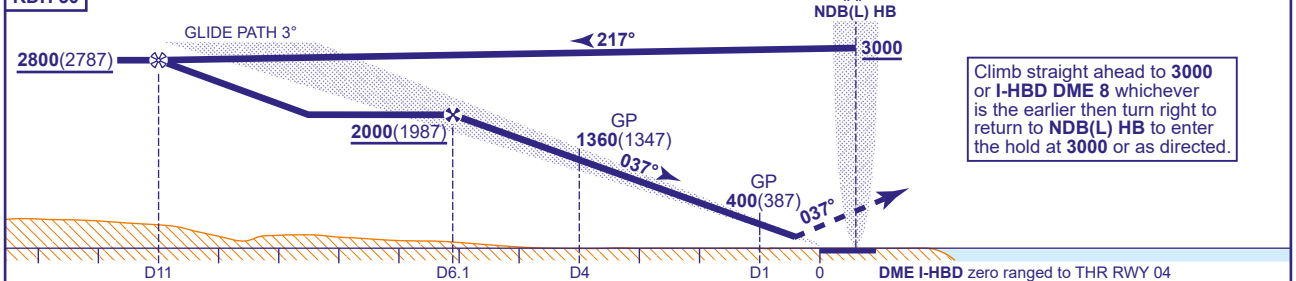
APP 130.850	BELFAST APPROACH	AD ELEVATION 15
TWR 122.830	BELFAST TOWER	THR ELEVATION 13
RAD 134.800	BELFAST RADAR	OBSTACLE ELEVATION 1744 AMSL (1731) (ABOVE THR)
ATIS 124.580	BELFAST INFORMATION	BEARINGS ARE MAGNETIC

TRANSITION ALTITUDE
6000

RECOMMENDED PROFILE GLIDEPATH 3.0°, 320FT/NM

DME I-HBD	6	5	4	3	2	1
ALT(HGT)	1990(1977)	1670(1657)	1360(1347)	1040(1027)	720(707)	400(387)

RDH 50



Aircraft Category		A	B	C	Rate of descent	G/S KT	160	140	120	100	80
OCA (OCH)	CLIMB GRAD 2.5%	636(623)	644(631)	652(639)		FT/MIN	850	740	640	530	420
VM(C)OCA (OCH AAL)	Total Area	1040(1025)	1120(1105)	1800(1785)							
	Southeast of RWY 04/22	1040(1025)	1120(1105)	1230(1215)							

AIRCRAFT UNABLE TO RECEIVE DME I-HBD

Advise ATC. Radar Ranges will be provided approaching the FAP and at 4NM and 1NM from the THR on the Final Approach.

NOTE 1 Direct Arrivals available on request to ATC.

CHANGE (5/24): OCA(OCH) CLIMB GRAD 3% MINIMA REVISED.